



GMT MONTHLY MEMBERSHIP PROGRESS REPORT

Results as of: 4/30/2019

Multiple District 25

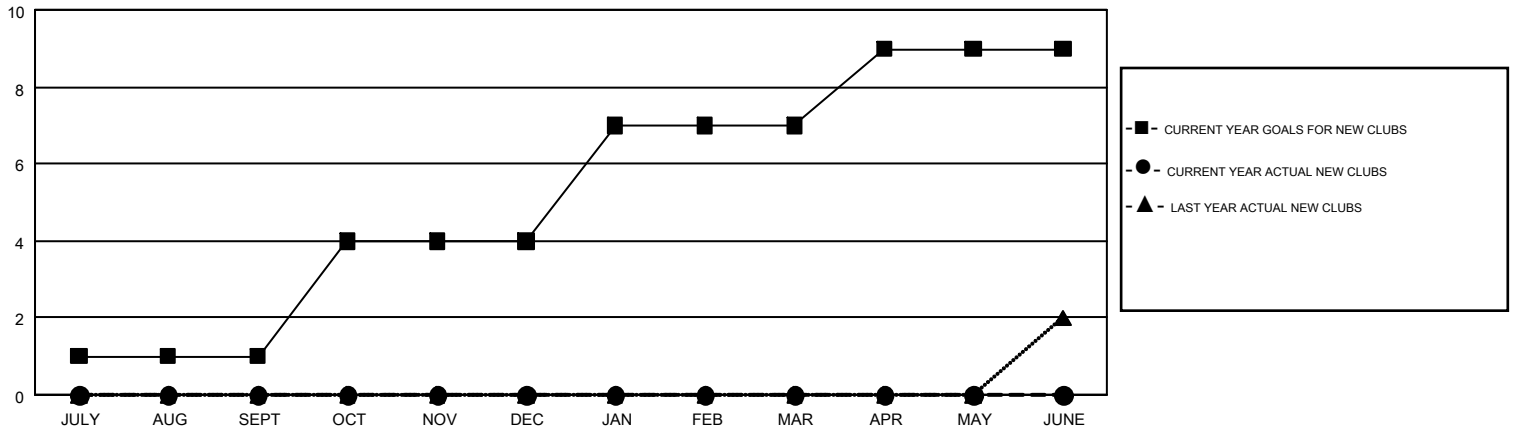
LOCATION: INDIANA

GMT: STEVE ANTON

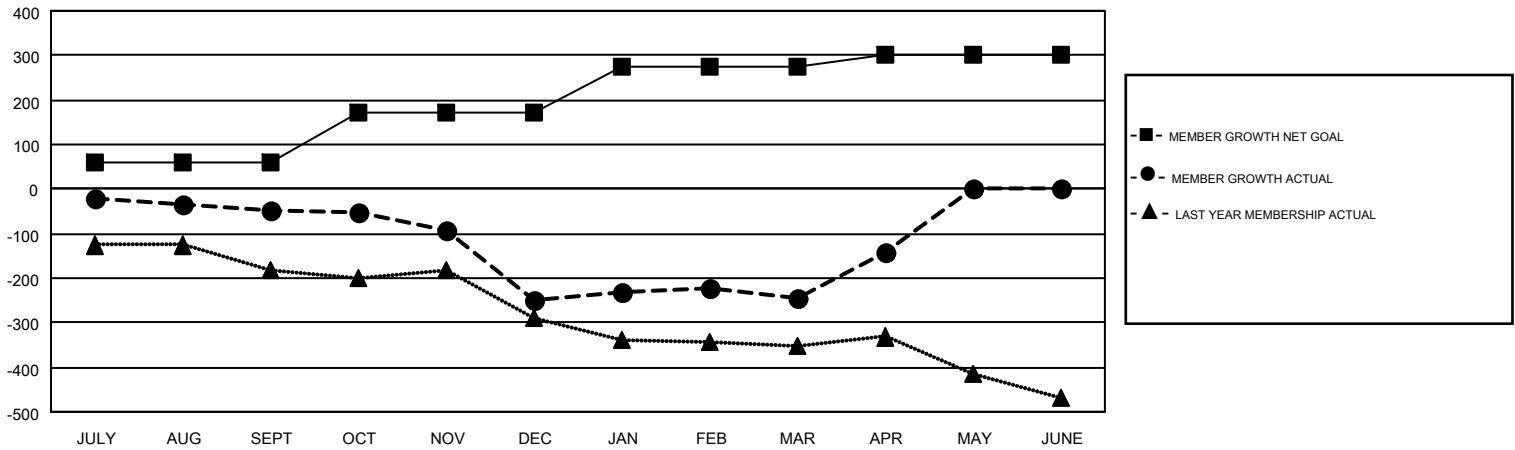
GMT CA 1

Clubs				Members			
RESULTS FOR 2018-2019				RESULTS FOR 2018-2019			
QUARTER	NEW CLUB GOAL	NEW CLUBS	DROPPED CLUBS	QUARTER	MEMBER GROWTH NET GOAL	MEMBER GROWTH ACTUAL	DROPPED MEMBERS ACTUAL (including transfers)
JULY/AUG/SEPT	1	0	0	JULY/AUG/SEPT	58	192	210
OCT/NOV/DEC	3	0	3	OCT/NOV/DEC	113	145	331
JAN/FEB/MAR	3	0	1	JAN/FEB/MAR	103	181	154
APR/MAY/JUNE	2	0	0	APR/MAY/JUNE	28	172	59

GOALS AND ACTUAL NEW CLUBS CUMULATIVE



GOALS AND ACTUAL MEMBERS CUMULATIVE



DROPPED CLUBS: 4	218 CLUBS OF 376 ADDED 1 OR MORE NEW MEMBERS	<u>GENDER DISTRIBUTION</u>	
		MALE	6,843 (70.48%)
		FEMALE	2,866 (29.52%)
<u>DROPPED MEMBERS</u>		TOTAL FAMILY UNIT MEMBERS 2,289	
DECEASED	143	FAMILY MEMBERS PAYING HALF DUES 1,166	
CLUB CANCELLED	7		
OTHER	604		
TOTAL	754		

[CLICK HERE FOR CUMULATIVE MEMBERSHIP DATA](#)